

**Vivace 7.2**  
**06.23790-9905**

#### Fixture details

Mounting	Wall
Light emission	Direct or Indirect
Fitting cover	Glass
Protection rate	IP 20
Housing	Aluminium
Finish	RAL 9011 graphite black textured
Certificates	CE, ISO 9001

#### Electric details

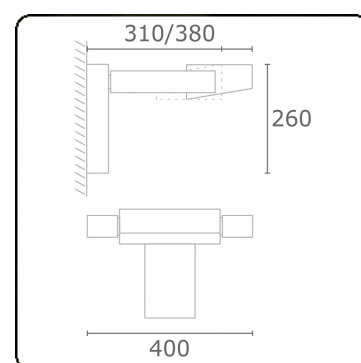
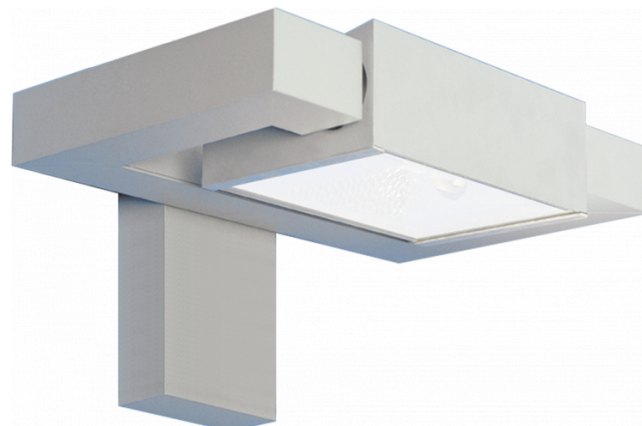
Protection class	I
Supply	230V
Control gear box	EG

#### Lamp details

Lamptype	LED 3000K
Wattage	24W
Gross luminous flux	2440
Luminaire power	29W
Number	1
Lifetime LED module	L80/B10 = 50000h
Color tolerance	MacAdam 3
CRI	85

#### Photometric details

CIE Fluxcode	53 83 97 99 73
--------------	----------------



#### Remarks

TC-D and LED with sandblasted glass, other light sources with clear glass

Verrijgbaar op aanvraag.

Disponible sur demande.

Available on request.

Auf Anfrage.

**WXYZ**  
kWh/1000h

**MULTILINE®**

2019/2015